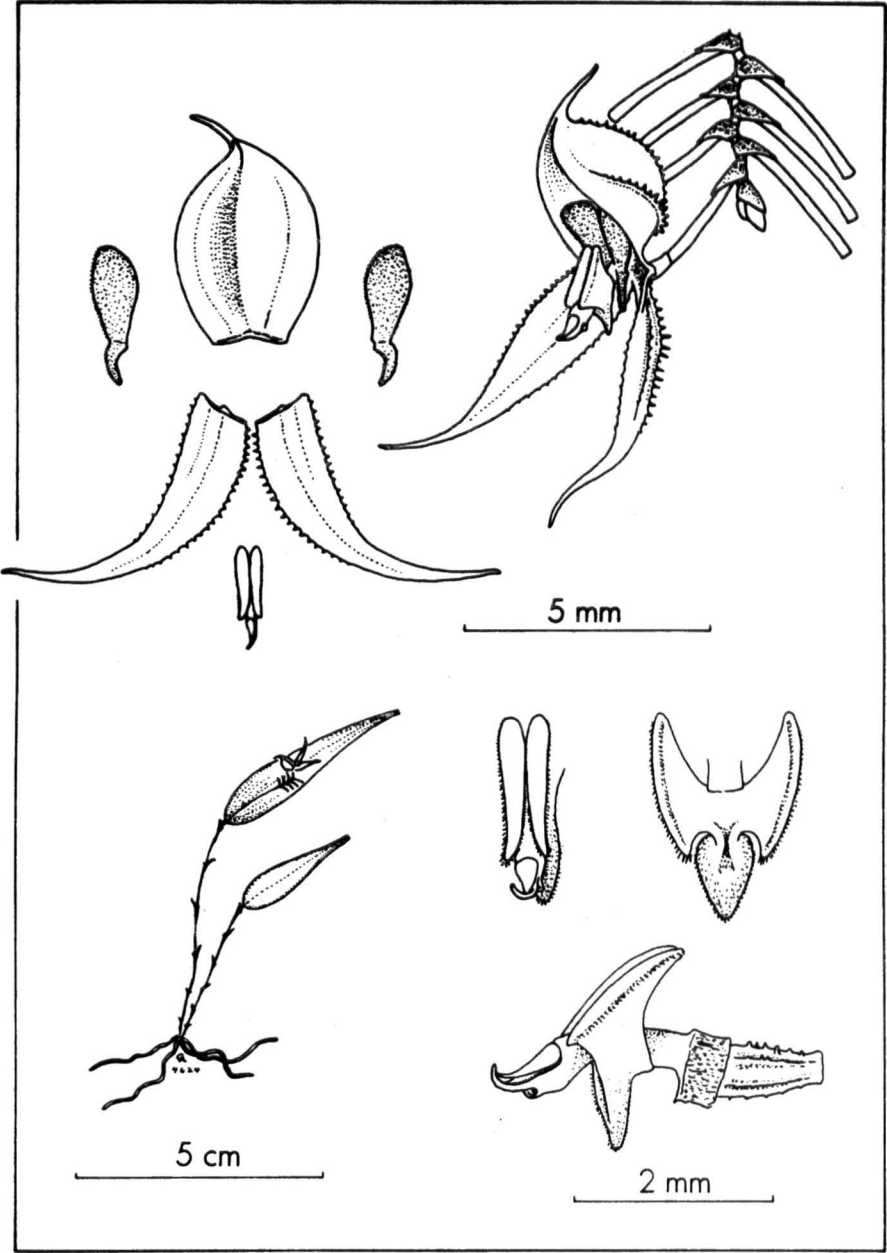


*Lepanthes acrogenia* Luer & Escobar, sp. nov.

Planta parva caespitosa, inflorescentia racemosa congesta disticha longipedicellata folio anguste ovato brevior, sepalis denticulatis, sepalo dorsali cucullato, sepalis lateralibus anguste triangularibus, petalis transverse bilobatis lobo superiore obovato obtuso, lobo inferiore multiminore anguste triangulari incurvo, labelli lamina anguste oblongis apice acutis, connectivis late cuneatis, appendice grandi crassa ovata breviter pubescenti.

Plant small, epiphytic, caespitose; roots fine. Ramicauls erect, slender 2-4 cm long, enclosed by 4-6 ciliate, lepanthiform sheaths. Leaf erect to suberect, coriaceous, narrowly ovate, acute, 28-43 mm long, 6-8 mm wide, the base cuneate into a petiole less than 1 mm long, inflorescence a congested, distichous, successively several-flowered raceme up to at least 5 mm long, borne on top of the leaf by a slender peduncle 10-12 mm long; floral bracts 1 mm long; pedicels 3 mm long; ovary 1 mm long; sepals orange, denticulate, denticulate-spiculate-carinate, the dorsal sepal elliptical, deeply concave, 5 mm long, 3 mm wide unexpanded, connate to the lateral sepals for 0.25 mm, the lateral sepals narrowly triangular, oblique, 6 mm long, 1.6 mm wide, essentially free, 2-veined; petals purple, cellular-glandular, transversely bilobed, 0.8 mm long, 2.6 mm wide, the upper lobe obovate, obtuse, the lower lobe much smaller, obliquely narrowly triangular, acute, incurved; lip purple,



*Lepanthes acrogenia* Luer & Escobar

bilaminate, the blades narrowly elliptical as thickened margins of broadly cuneate connectives, the apices acute, the bases narrowly rounded, 1.5 mm long, the body broad, connate to the column above the base, the sinus occupied by a thick, descending, ovate, minutely pubescent appendix; column slender, 2 mm long, the anther dorsal, the stigma apical.

Etymology: From the Greek *akrogeneios*, "with a prominent chin," referring to the large appendix.

COLOMBIA: Dept. of Nariño: epiphytic in cloud forest above Ricaurte, alt. 1600 m, 3 Nov. 1979, collected by A. Hirtz, C. Luer, J. Luer, A. Hirtz & K. Walter 4624 (Holotype: SEL).

This species is characterized by the long-pedicellate, distichous raceme borne on top of a narrowly ovate leaf. The sepals are orange and denticulate, the dorsal deeply cucullate, the laterals narrowly triangular, free and spreading. The petals are bilobed with the obtuse upper lobe much larger. The blades of the lip are merely thickened margins of broad connectives. The appendix is large and fleshy, and descends downward from the body.